



F1P 015-120 Series T-Type Hydraulic Filter Assemblies

High-Pressure Hydraulic Filter Assemblies



Features

- Utilize PTI PG series elements (sold separately)
- 6,000 psi (414 bar) operating pressure
- 15, 30, 50, 80 & 120 gpm (57, 114, 189, 303 & 454 lpm) nominal flow rates
- Elements available with $\beta_{x(c)} \geq 1000$ Glas-Tech III[®] media
- Valve options - bypass & no bypass
- Optional visual & visual/electrical indicators (sold separately)

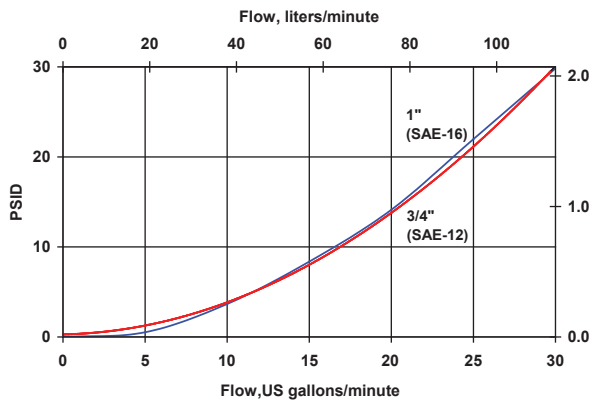


Technical Data

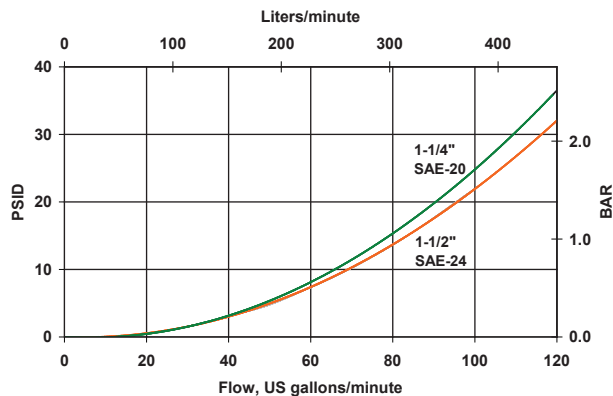
- **Pressure & Temperature Rating**
 - Operating Pressure: 6,000 psi (414 bar)
 - Proof Pressure: 9,000 psi (621 bar)
 - Burst Pressure: 12,000 psi (828 bar)
 - Operating Temperature: -40°F to +250°F (-40°C to +121°C)
- **Materials of Construction**
 - Head: Steel
 - Bowl: Steel
- **Bypass Options**
 - Bypass Valve Setting: 100 psid (6.9 bar) ±10%
- **Differential Pressure Indicators**
 - Visual Indicator : 75 psid (5.2 bar) ±10% activation, manual reset
 - Visual Electrical Indicator: 75 psid (5.2 bar) ±10% activation
12 to 220 Volt AC/DC, 2.5 AMP, 60VA, 40W Contacts - SPDT NO or NC, DIN Connector
- **Seal Material Options**
 - Seal Material: Buna N
Viton®
Ethylene Propylene

Flow Rate/Pressure Drops

Housing F1P 015/025/030 - Flow vs Pressure Drop



Housing F1P 050/080/120 - Flow vs Pressure Drop



The PTI Technologies F1P series of high-pressure hydraulic filter assemblies utilize PG series filter elements. Please see the PG series filter element brochure for flow vs pressure drop data.

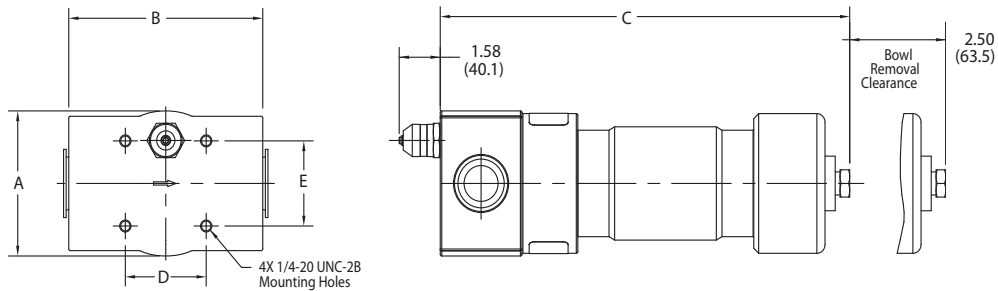
Housing Weight

Filter Assembly (housing only, elements not included) Weight

| Size | Weight |
|------|--------------------|
| 015 | 9.1 lbs (4.1 kg) |
| 030 | 12.0 lbs (5.5 kg) |
| 050 | 42.4 lbs (19.3 kg) |
| 080 | 51.0 lbs (23.2 kg) |
| 120 | 59.7 lbs (27.1 kg) |

The PTI Technologies F1P Series of high-pressure hydraulic filter assemblies utilize PG Series filter elements. Please see the PG Series Filter Element brochure for flow vs pressure drop data.

Dimensions in Inches (mm)



Dimensions

| Nominal Flow | Dimension A | Dimension B | Dimension C | Dimension D | Dimension E |
|--------------|--------------|--------------|---------------|-------------|-------------|
| -015 | 3.56 (90.5) | 3.94 (100.0) | 6.93 (176.0) | 3.06 (77.8) | 2.48 (63.0) |
| -030 | 3.56 (90.5) | 3.94 (100.0) | 12.71 (322.8) | 3.06 (77.8) | 2.48 (63.0) |
| -050 | 5.32 (135.0) | 7.48 (190.0) | 11.24 (285.6) | 3.12 (79.2) | 3.12 (79.2) |
| -080 | 5.32 (135.0) | 7.48 (190.0) | 15.79 (401.0) | 3.12 (79.2) | 3.12 (79.2) |
| -120 | 5.32 (135.0) | 7.48 (190.0) | 20.35 (517.0) | 3.12 (79.2) | 3.12 (79.2) |

Ordering Information

Assembly:



Table 1

| Code | Nominal Flow |
|------|-------------------|
| 015 | 15 gpm (57 lpm) |
| 030 | 30 gpm (114 lpm) |
| 050 | 50 gpm (189 lpm) |
| 080 | 80 gpm (303 lpm) |
| 120 | 120 gpm (454 lpm) |

Table 2 Filtration Rating

| Code | Micron Rating | Media |
|------|-------------------|-------|
| N | No Filter Element | |

Table 3 Collapse

| Code | Collapse Rating |
|------|-------------------|
| N | No Filter Element |

Table 4 Seals

| Code | Material |
|------|----------|
| B | Buna N |
| V | Viton® |
| E | Buna N |

Table 5 Ports

| Code | Option | Application |
|------|------------------------------|-------------------|
| L | 3/4" SAE (-12) O-Ring Boss | F1P 015 |
| M | 1" SAE (-16) O-Ring Boss | F1P 030 |
| N | 1-1/4" SAE (-20) O-Ring Boss | F1P 050 |
| P | 1-1/2" SAE (-24) O-Ring Boss | F1P 080 & F1P 120 |
| 2 | 1-1/2" SAE Flange - Code 62 | F1P 120 |

Table 6 Gage Options

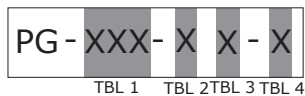
| Code | Option |
|------|--------|
| O | None |

Indicators:
Sold Separately
Custom Installed

Indicator Options

| Description | Buna | Viton |
|---|-------------|-------------|
| 75 psid (5.2 bar) ± 10% Visual | CF-440-0088 | CF-440-0089 |
| 75 psid (5.2 bar) ± 10% Visual/Electrical | CF-440-0090 | CF-440-0091 |

Element:



Element: Sold Separately

Table 1 Size

| Code | Nominal Flow |
|------|-------------------|
| 015 | 15 gpm (57 lpm) |
| 030 | 30 gpm (114 lpm) |
| 050 | 50 gpm (189 lpm) |
| 080 | 80 gpm (303 lpm) |
| 120 | 120 gpm (454 lpm) |

Table 2 Filtration Rating

| Code | Micron Rating | Media |
|------|----------------------------|----------------|
| V | $\beta_{4.2(c)} \geq 1000$ | Glas-Tech III® |
| G | $\beta_{7(c)} \geq 1000$ | Glas-Tech III® |
| H | $\beta_{9(c)} \geq 1000$ | Glas-Tech III® |
| K | $\beta_{15(c)} \geq 1000$ | Glas-Tech III® |
| J | $\beta_{24(c)} \geq 1000$ | Glas-Tech III® |
| L | $\beta_{35(c)} \geq 1000$ | Glas-Tech III® |
| *C | 10 µm | Cellulose |
| *D | 25 µm | Cellulose |

Table 3 Collapse

| Code | Collapse Rating |
|------|----------------------|
| H | 300 psid (21 bar) |
| U | 3,000 psid (207 bar) |

Table 4 Options

| Code | Option |
|------|-----------------------|
| Omit | Standard Element |
| W | DryPak® configuration |

* 300 psid collapse only

For more info email: fluidpower@ptitechnologies.com



PTI Technologies Inc.
501 Del Norte Boulevard
Oxnard, California 93030
800-331-2701 • 805-604-3700
www.ptitechnologies.com



©2021 An ESCO Technologies Company All Rights Reserved.

PTI Technologies Inc is certified to ISO standards